

MASHERS

CATEGORY INFORMATION

PHILLIPS-SAFETY.COM

COPYRIGHT ©2025. ALL RIGHTS RESERVED



PHILLIPS SAFETY
PRODUCTS INC.



Phillips Safety is the industry leader in occupational safety eyewear. In business for over 100 years, you are being served with the dedication and craftsmanship of a family owned company.

Phillips Safety has been producing occupational safety glasses since 1905 and continues to develop and produce the highest quality glasses and lenses today. A leading manufacturer of specialty safety eyewear in the United States, Phillips Safety adheres to strict ANSI Z87-2+ and EN 207 CE standard certifications, holding itself to a highest standard and prides itself on producing glasses with the finest quality materials available.

All safety glasses produced and sold by Phillips Safety meet strict industry standards for military, medical, research laboratories, and a variety of other industries.

With Phillips Safety's dedicated team, you can rest assured knowing that all your prescription safety needs are met.

CATEGORY INFORMATION

MASHERS

If you're a hot glass worker, a masher is an essential tool to have. At Phillips Safety we provide high-quality mashers in a variety of head formats to cater to all your glass working needs. Our mashers are durable, reliable, and a must-have for any hot glass worker. They are designed to quickly and accurately complete your work, ensuring you meet your deadlines without compromising on quality.

Phillips Safety's Parallel Masher is the epitome of quality. This durable and reliable tool ensures that you can flatten and shape your glass without any incidents or issues. With the added benefit of interchangeable graphite heads, this masher is versatile enough to handle any job, allowing you to focus on your work without any worries. Due to its exceptional quality, the Parallel Masher is right for all your glass working needs.



CATEGORY INFORMATION

MASHERS



Our Parallel Masher is a great investment that offers a wide range of possibilities for your work. It comes with flat round heads, but we also provide additional replacement heads in four other shapes, ensuring that you have the right tools to perform the work you need to be done. Apart from the round flat head, which is also available separately for replacement, you can choose from a 2" square flat head, a lentil head, a large radial head, and a small radial head. With all these interchangeable graphite heads, you can confidently take on any glass working project with ease and precision.

CATEGORY INFORMATION
MASHERS

A large, stylized teal graphic of a masher head, composed of concentric arcs and a central circle, serving as a background for the text.

PHILLIPS SAFETY
MASHERS

PRODUCT INFORMATION
2" SQUARE FLAT HEAD PARALLEL MASHER



The 2" Square Flat Head Parallel Masher is a replacement head designed specifically for the Parallel Masher. It is made of high-quality graphite, with an internal diameter measurement of 1.75" for the round head and a square head measurement of 2" x 2". Please note that the 2" Square Flat Head Parallel Masher is sold individually so that replacement of chipped or broken sides is easy and affordable. If you need one complete set, remember to get two heads.

SPECIFICATION

SIZE: 1.75" FOR ROUND HEAD, 2" X 2" FOR
THE SQUARE HEAD.

WEIGHT: 16 oz

Sold individually

MATERIAL: Graphite

COLOR: Black

FEATURES: Affordable, high-quality

PRODUCT INFORMATION
LARGE RADIAL HEAD PARALLEL MASHER



The Large Radial Head Parallel Masher is a replacement head designed specifically for the Parallel Masher. It is made of high-quality graphite and has an internal diameter measurement of 1.75", with a 3/4" wide head indent. Please note that the Large Radial Head Parallel Masher is sold individually so that replacement of chipped or broken sides is easy and affordable. If you need one complete set, remember to get two heads.

SPECIFICATION

SIZE: INTERNAL DIANEMTER OF 1.75" , WIDE

HEAD INDENT 3/4"

WEIGHT: 16 oz

Sold individually

MATERIAL: Graphite

COLOR: Black

FEATURES: Affordable, high-quality

PRODUCT INFORMATION
LENTIL HEAD PARALLEL MASHER



The Lentil Head Parallel Masher is a replacement head designed specifically for the Parallel Masher. It is made of high-quality graphite and has an internal diameter measurement of 1.75". Please note that the Lentil Head Parallel Masher is sold individually so that replacement of chipped or broken sides is easy and affordable. If you need one complete set, remember to get two heads.

SPECIFICATION

SIZE: 1.75" Diameter

WEIGHT: 16 oz

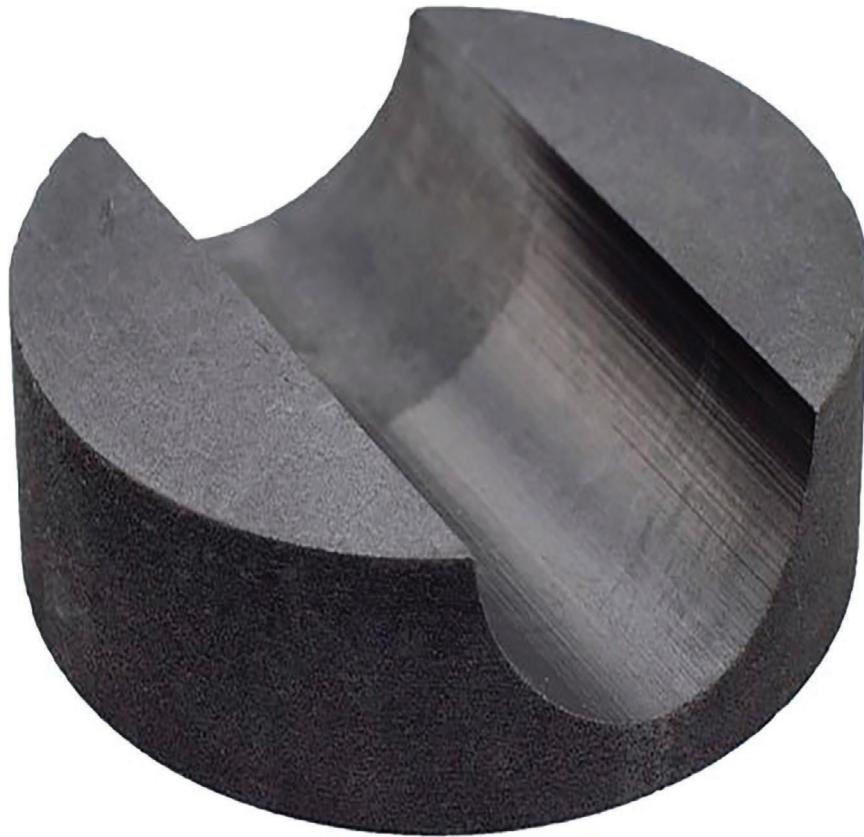
Sold individually

MATERIAL: Graphite

COLOR: Black

FEATURES: Affordable, high-quality

PRODUCT INFORMATION
SMALL RADIAL HEAD PARALLEL MASHER



The Small Radial Head Parallel Masher is a replacement head designed specifically for the Parallel Masher. It is made of high-quality graphite and has an internal diameter measurement of 1.75", with a 5/8" wide head indent. Please note that the Small Radial Head Parallel Masher is sold individually so that replacement of chipped or broken sides is easy and affordable. If you need one complete set, remember to get two heads.

SPECIFICATION

SIZE: 1.75" DIAMETER, 5/8 WIDE HEAD INDENT

WEIGHT: 16 oz

Sold individually

MATERIAL: Graphite

COLOR: Black

FEATURES: Affordable, high-quality

PRODUCT INFORMATION

PARALLEL MASHER



The Parallel Masher is a versatile tool designed for flattening and shaping glass. Made of high-quality aluminum, this masher comes with a set of two graphite round flat heads measuring 1.75" in diameter. Other head shapes are also available separately, including a lentil head, a small radial head, a large radial head, and a 2" square flat head. For more information about different replacement heads, check out our Mashers collection.

SPECIFICATION

SIZE: 1.75" GRAPHITE ROUND FLAT HEADS

USE: FOR FLATTENING AND SHAPING GLASS

MATERIAL: GRAPHITE, ALUMINUM

Replacements are available and sold separately, including lentil head, small radial head, large radial head, and 2" square flat head.

PRODUCT INFORMATION
ROUND FLAT HEAD PARALLEL MASHER



The Round Flat Head Parallel Masher is a replacement head designed specifically for the Parallel Masher. It is made of high-quality graphite and has an internal diameter measurement of 1.75". Please note that the Round Flat Head Parallel Masher is sold individually so that replacement of chipped or broken sides is easy and affordable. If you need one complete set, remember to get two heads.

SPECIFICATION

SIZE: INTERNAL DIANEMTER OF 1.75"

WEIGHT: 16 oz

Sold individually

MATERIAL: Graphite

COLOR: Black

FEATURES: Affordable, high-quality

CONTACT

Should you need any further information,
please do not hesitate to contact us.

123 Lincoln Blvd, Middlesex, NJ 08846, USA



+1 (866) 575 1307



service@phillips-safety.com



www.phillips-safety.com

