

**SQUARE ARM OVERHEAD LEAD ACRYLIC MOBILE
BARRIER WITH TORSO CUTOUT
PTO-001**

PRODUCT INFORMATION

PHILLIPS-SAFETY.COM

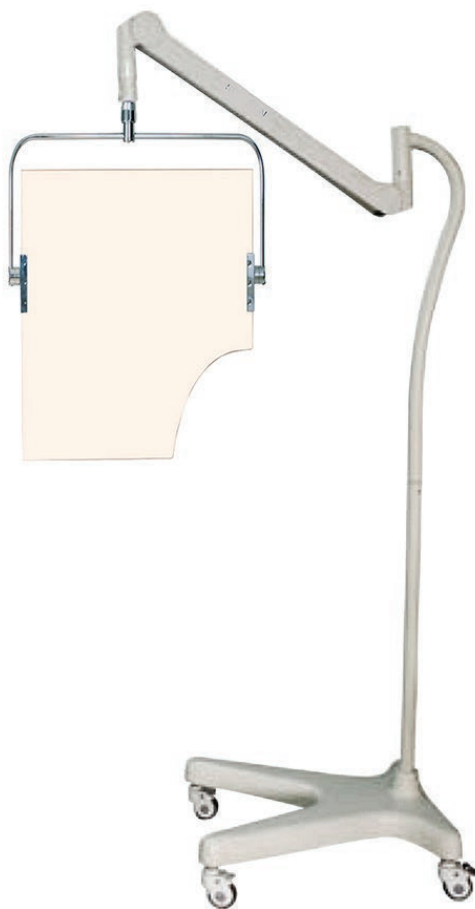
COPYRIGHT ©2025. ALL RIGHTS RESERVED



**PHILLIPS SAFETY
PRODUCTS INC.**

PRODUCT INFORMATION

SQUARE ARM OVERHEAD LEAD ACRYLIC MOBILE BARRIER WITH TORSO CUTOUT



The Square Arm Overhead Lead Acrylic Mobile Barrier With Torso Cutout is a radiation barrier shield with 45 degrees of rotation. Its torso cut-out helps fit most patients and, thanks to its offset design, it can be easily placed anywhere around the patient to provide protection during examination. Featuring a lead acrylic window of 0.50mm Pb equivalence protection, this barrier shield meets industry standards for medical x-ray protection. It also features four hospital grade casters with brakes, to provide better mobility. In addition, its square arm is constructed from powder coated alloy, which makes it resistant to corrosion.

SPECIFICATION

WINDOW SIZE: 32" x 24"

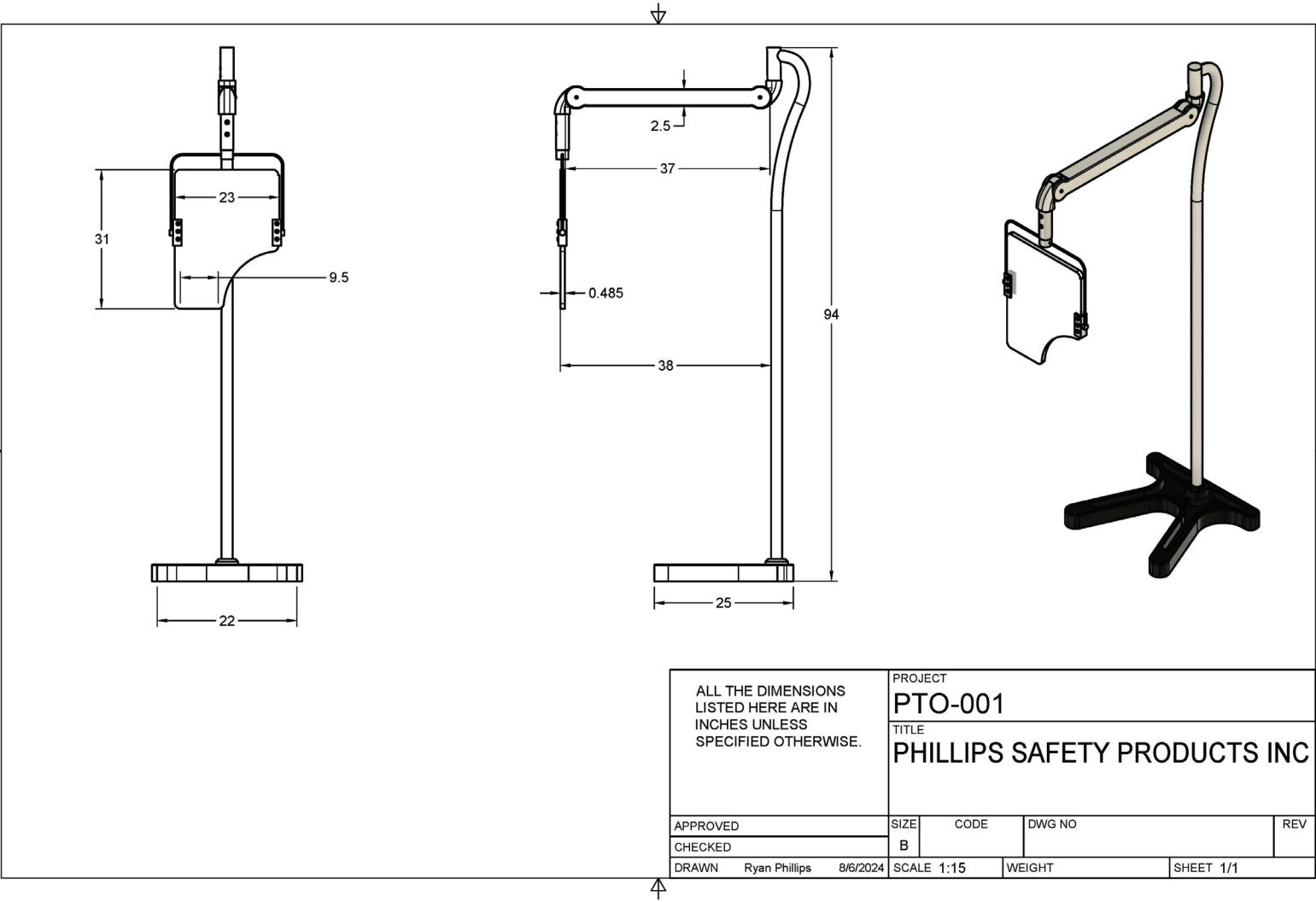
Protection Level: 0.50 mm Pb LE

MATERIAL: Metal

FEATURES: Four grade casters with brakes

PRODUCT INFORMATION

SQUARE ARM OVERHEAD LEAD ACRYLIC MOBILE BARRIER WITH TORSO CUTOUT - PTO-001



PRODUCT INFORMATION

SQUARE ARM OVERHEAD LEAD ACRYLIC MOBILE BARRIER WITH TORSO CUTOUT

CONTACT

Should you need any further information,
please do not hesitate to contact us.

123 Lincoln Blvd, Middlesex, NJ 08845, USA



+1 (866) 757 1307



service@phillips-safety.com



www.phillips-safety.com

